

# TWO-WAY PRESSURE REDUCING VALVE



## Characteristics

TYPE	MAX FLOW	(P) MAX PRESSURE	MAX PRESSURE SETTING	LOCKING TORQUE	WEIGHT
RP2 - 06	6 l./min.	500 bar	20 ÷ 200 bar	70Nm CH 24 60Nm CH 30	Kg. 0.6
RP2 - 12	12 l./min.				Kg. 0.7
RP2 - 22	22 l./min.				Kg. 0.8

## Description

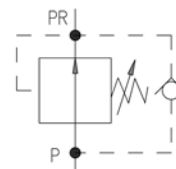
## Symbol

Two-way, direct-operated, pressure reducing valve type RP2. Pressure inlet on "P" port, reduced pressure outlet on "RP" port.. The particular poppet type construction allows an almost leak-free seal from "P" to "RP". Once the pressure value set on "P" has been reached, and set through the hexagonal screw, the valve stops the flow from "P" to "RP".

The optional use on "P2" port of a pressure switch permits to have an electric feedback which is controlled from the machine software. The adjusting hexagonal screw and locking nut on the body are provided with a hole for optional setting sealing.

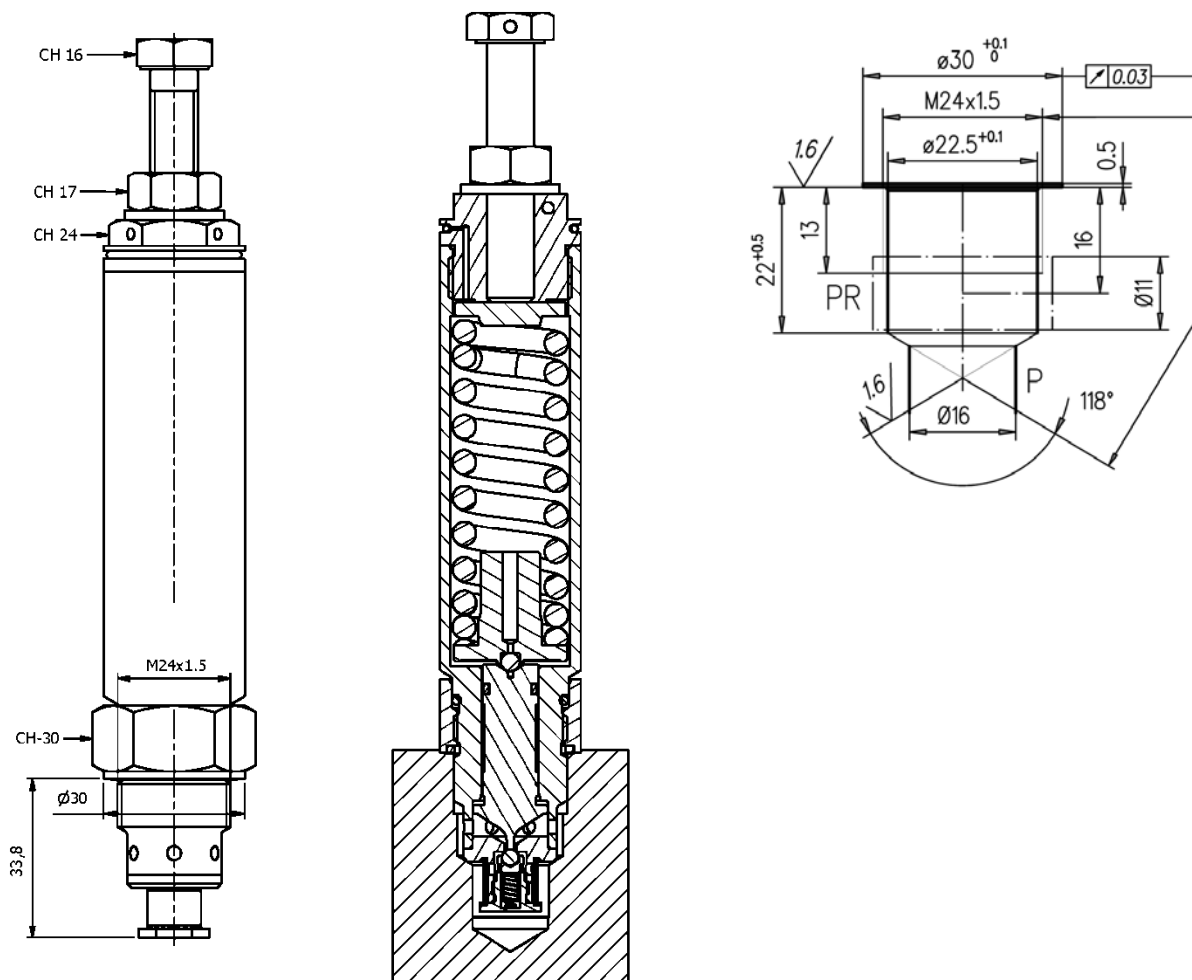
Typical execution: screw-in cartridge (RP2-C), other use with Cetop-03 (RP2-3) or in-line (RP2-L)

To assemble the valve, screw the CH24 hex nut until it locks (70Nm), then unscrew the hexagonal nut CH30 (holding the hexagonal CH24 still) and exerting a tightening torque of 60 Nm.



## RP2-C Dimensions

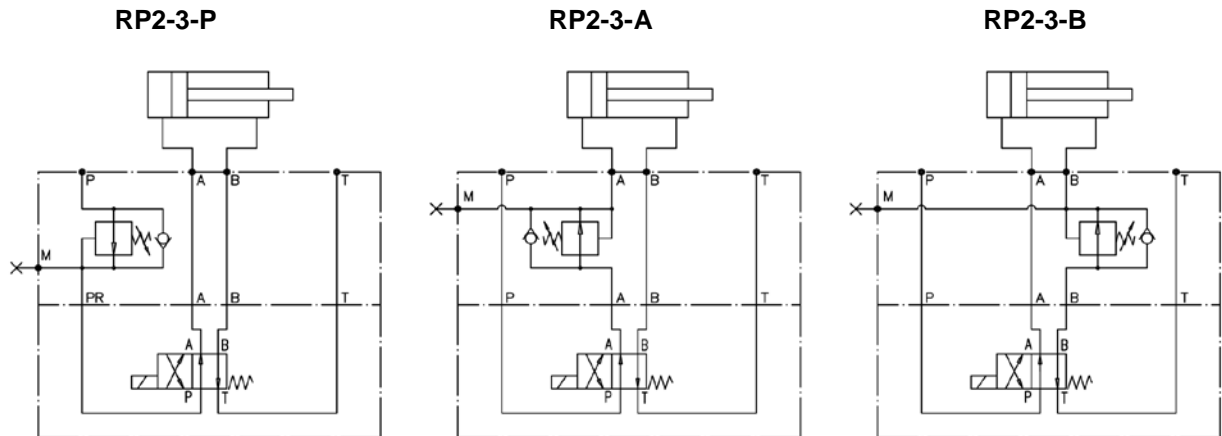
## Cavity



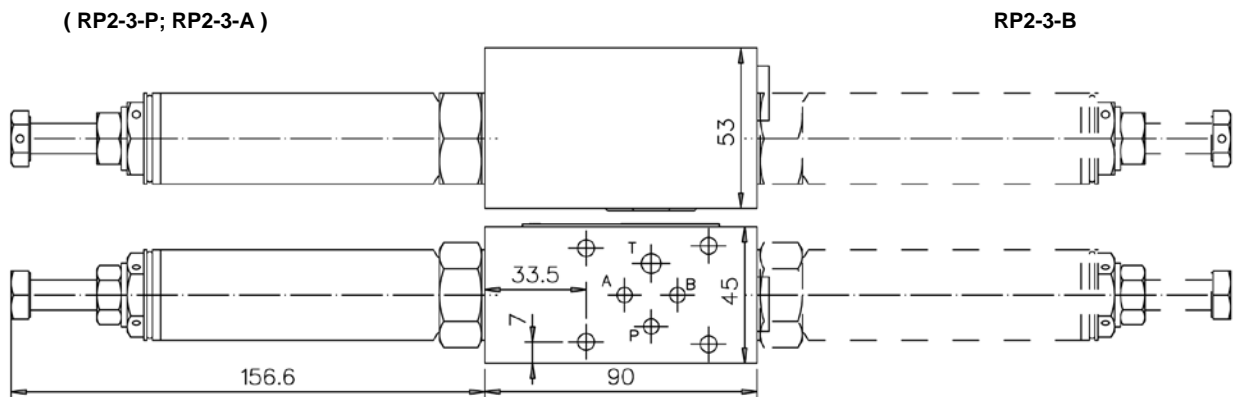
# TWO-WAY PRESSURE REDUCING VALVE



## RP2-3 symbol

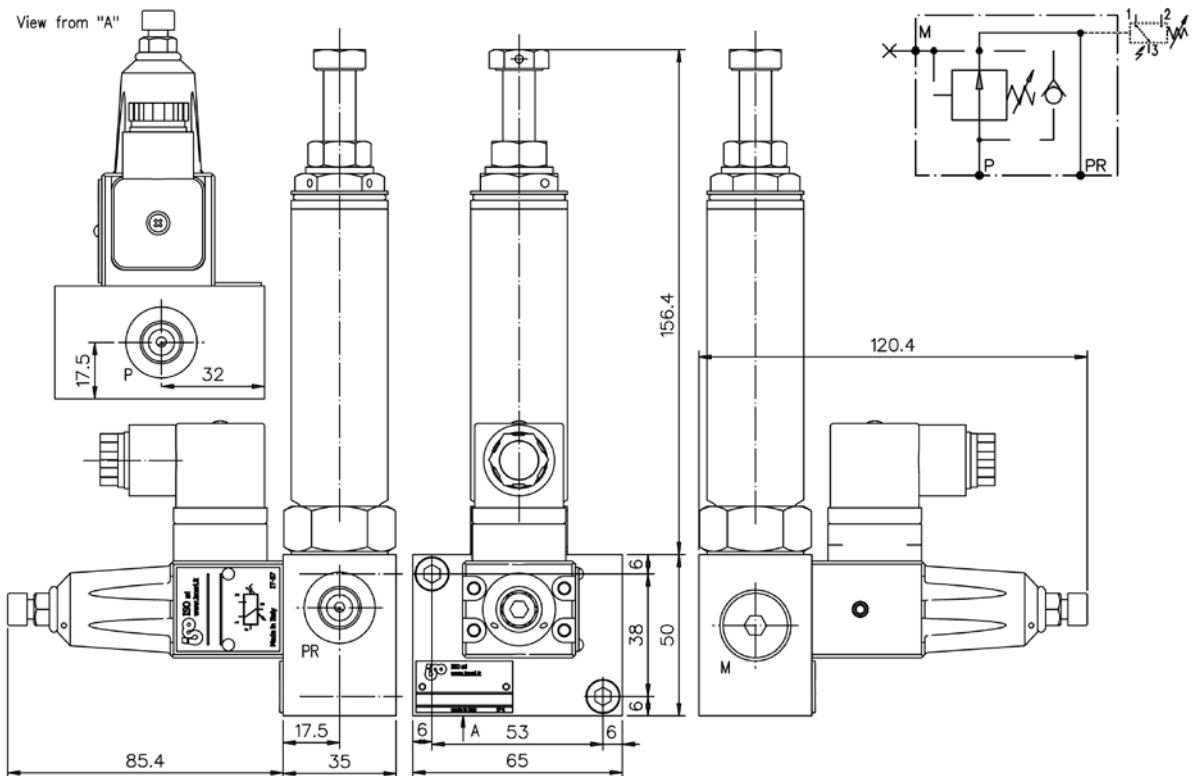


## RP2-3 Dimensions



## RP2-L Dimensions

## Symbol



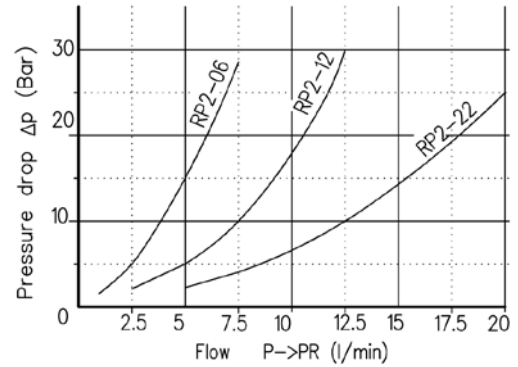
# TWO-WAY PRESSURE REDUCING VALVE



## Installation rules

- The valves type RP2 can be mounted in any position
- Fluid to be used: hydraulic oil in compliance with DIN 51524 rules, viscosity between 30 and 100 mm<sup>2</sup>/s (cSt) at 40°C
- Recommended filtration: 25μ
- Hydraulic fluid temperature: from -20° to +75°C

## Diagram



## Ordering code

R	P	Z	-	*	-	*	*	-	*	*	*	-	*	-	*	*	*	*	*	
<b>Pressure reducing vane type:</b> C = Cartridge model 3 = With cetop-03 body L = With In line manifold			<b>Size :</b> 06 = 6 Liters 12 = 12 Liters 22 = 22 Liters			<b>Setting :</b> 200 = 20 - 200 Other setting on request			<b>Connections (only for RP2-3) :</b> A = Pressure reducing valve on port "A" B = Pressure reducing valve on port "B" P = Pressure reducing valve on port "P"			<b>Connections (only for RP2-L) :</b> 14 = 1/4 BSP 15 = 3/8 BSP 16 = 9/16-18 UNF (on request) 17 = 1/4-18 NPTF (on request)			<b>Connections (only for RP2-L) :</b> If omit it = pre-arranged for pressure switch ( connection hole on request ) H = with pressure switch (see table G 02)			<b>Seals material:</b> If omit it = NBR (standard ) /F = FKM ( temp. - 20 + 80) /E = EPDM		